

X line 2000R Metal laser melting system

LaserCUSING® with multilaser technology in XXL format!
High performance production machine with 2 x 1000 watt lasers for safe processing of reactive materials.



Backside of X line 2000R with crane loading during the set-up phase.



X line 2000R TECHNICAL DATA



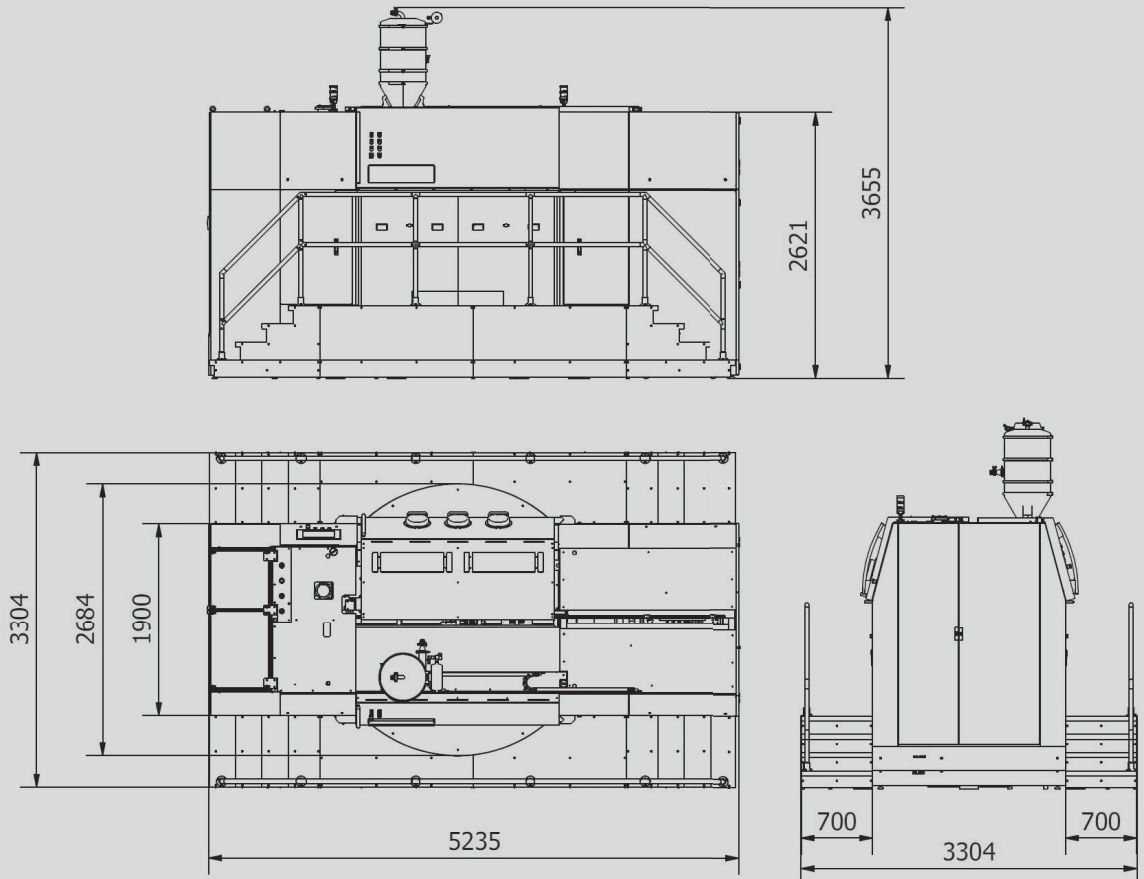
Build envelope LaserCUSING®	800 x 400 x 500 mm (x, y, z)	
Layer thickness LaserCUSING®	30 – 150 µm	
Production speed LaserCUSING®	10 – 100 cm³/h (depending on material)	
Laser system	2 fibre laser with 1 kW (cw) each	
Max. scanning speed	7 m/s	
Focus diameter	approx. 100 – 500 µm	
Heating	9 kW, maximum temperature 200°C	
Connected loads	average power consumption 13 kW Power supply 3/N/PE AC 400 V, 63 A, 50 – 60 Hz	
Inert gas supply	1 gas connection provided N ₂ generator external (optional)	
Inert gas consumption	approx. 17 – 34 l/min*	
Dimensions	5235 x 3655 x 3304 - 3904 mm (W x H x D)	
Machine weight	approx. 9200 kg (net weight)	
Operating conditions	15 – 25°C	
Necessary peripheral equipment	Sieving station, powder silo	
LaserCUSING® materials	CL 31AL	Aluminium alloy (AlSi10Mg)
	CL 41TI ELI**	Titanium alloy (TiAl6V4 ELI)
	CL 100NB	Nickel based alloy (Inconel 718)

*Inert gas consumption during the building process.

**The material is currently being prepared.

Machine design: www.newkom.info | Photos: www.finamedia.de
Artwork: www.brandnew-design.de
02/2015 | Subject to technical changes

X line 2000R



Concept Laser GmbH

An der Zeil 8
D 96215 Lichtenfels

Sales Department

info@concept-laser.de
T: +49 (0)95 71. 1679 200
F: +49 (0)95 71. 1679 299