

CONCEPTLASER

hofmann innovation group

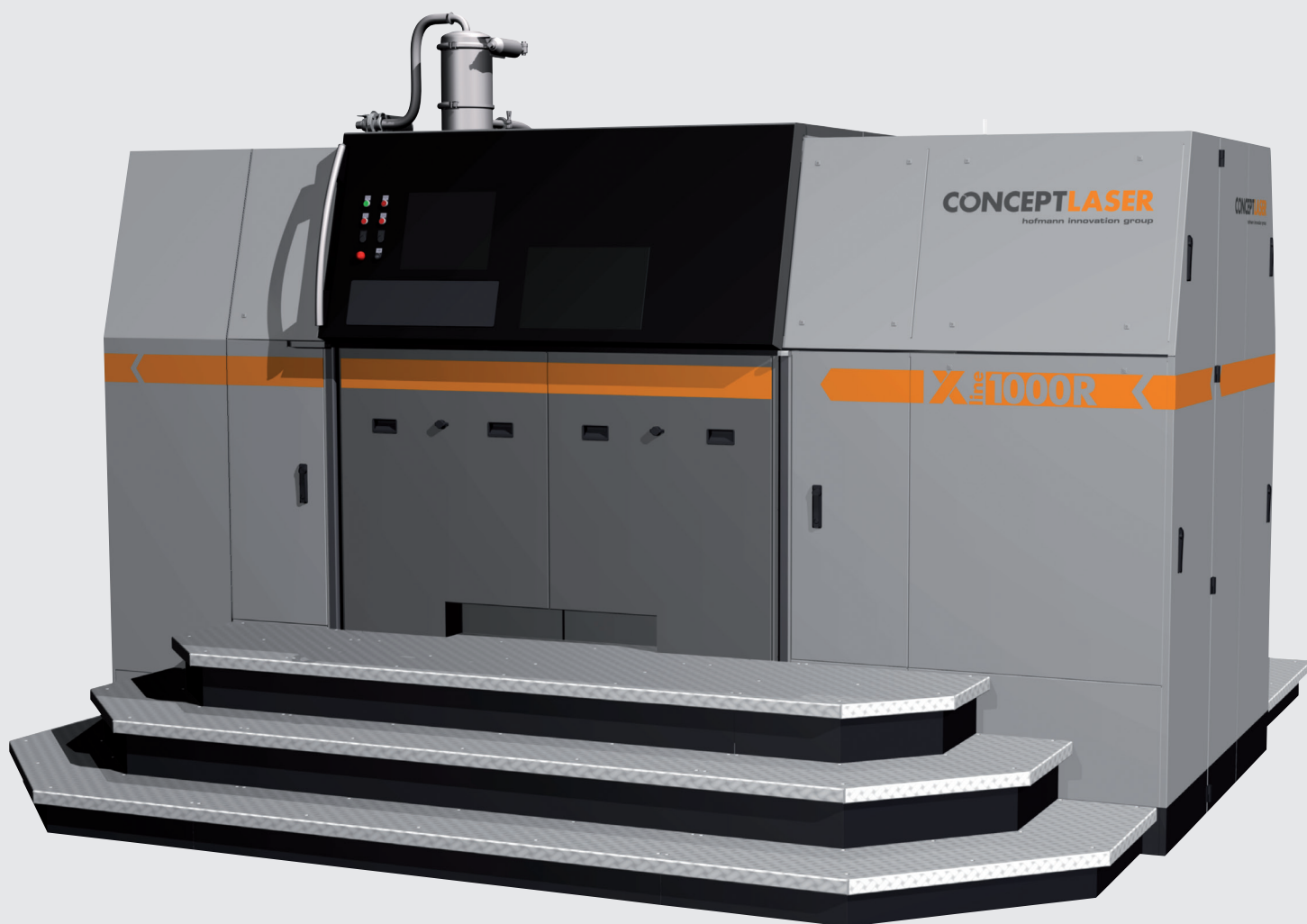
X line 1000R

Metal laser melting system

LaserCUSING® in XXL format!
High performance production machine for
safe processing of reactive materials.



Standard design available
in grey, optional in white.

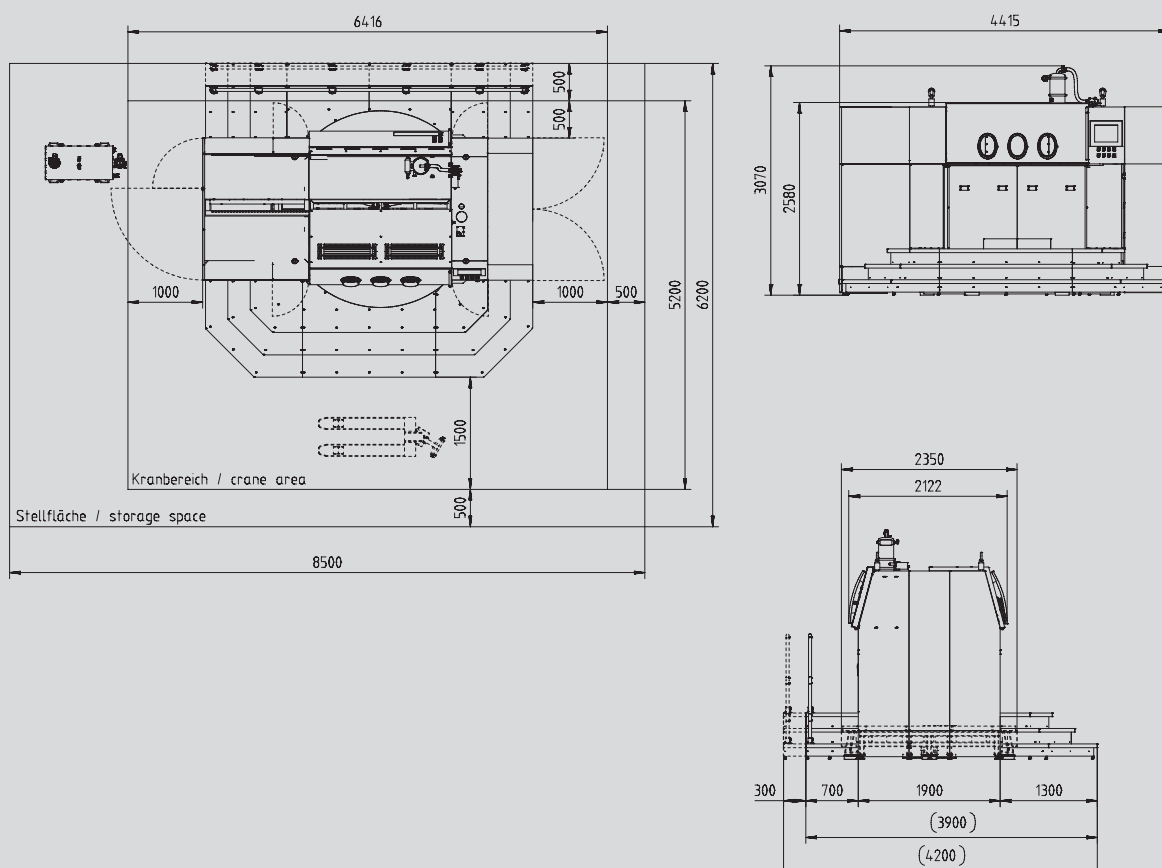


X line 1000R TECHNICAL DATA

Build envelope LaserCUSING®	630 x 400 x 500 mm (x, y, z)
Layer thickness LaserCUSING®	30 – 200 µm
Production speed LaserCUSING®	10 – 100 cm³/h (depending on material)
Laser system	Fibre laser 1 kW (cw)
Max. scanning speed	7 m/s
Focus diameter	approx. 100 – 500 µm
Heating	9 kW, maximum temperature 200°C
Connected loads	average power consumption 13 kW Power supply 3/N/PE AC 400 V, 63 A
Inert gas supply	2 gas connections provided N ₂ generator external (optional)
Inert gas consumption	approx. 17 – 34 l/min*
Dimensions	4415 x 3070 x 3900-4500 mm (W x H x D)
Machine weight	8000 kg (net weight)
Operating conditions	15 - 30°C
Necessary peripheral equipment	Sieving station, powder silo
LaserCUSING® materials	CL 31AL** Aluminium alloy (AlSi10Mg) CL 41Ti ELI** Titanium alloy (TiAl6V4 ELI) CL 100NB** Nickel based alloy (Inconel 718)

*Inert gas consumption during the building process.

**The material is currently being prepared.



Concept Laser GmbH
An der Zeil 8
D 96215 Lichtenfels

Sales Department
info@concept-laser.de
T: +49 (0) 95 71. 949 238
F: +49 (0) 95 71. 949 249

A company of
HOFMANN
innovation group

www.concept-laser.de